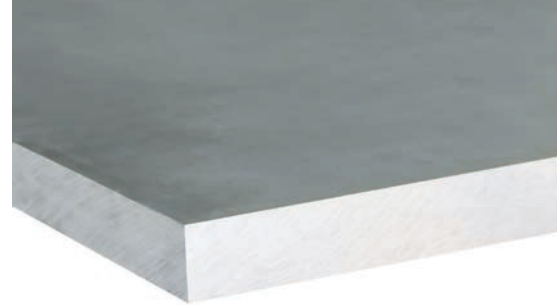




SPECIAL ALLOYS FOR MOULDS

HOKOTOL®

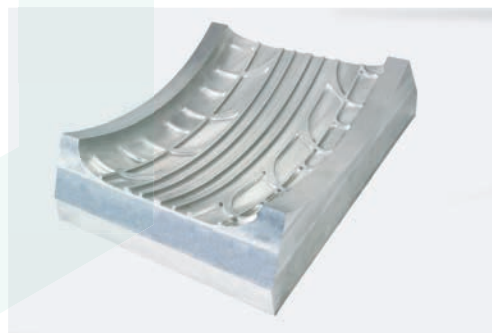
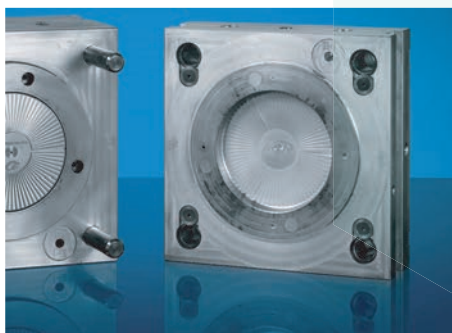
Hokotol® has been developed to ensure high hardness across the entire thickness of the plate. This is an advantage when surfaces need to be polished or machined. Polished surfaces are often used in translucent elements such as headlights, spotlights or lamp housings.



CHEMICAL COMPOSITION (WEIGHT %)

ELEMENTS	Si	Fe	Cu	Mn	Mg	Cr	Zn	Zr	Ti
Minimum	-	-	1.5	-	1.8	-	5.7	0.08	-
Maximum	0.30	0.35	2.6	0.1	2.6	0.05	7.6	0.25	0.06

Information transcribed from the supplier datasheet.

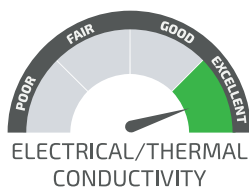


MAIN CHARACTERISTICS

- Excellent machining
- Uniform mechanical properties in total plate thickness
- Excellent mechanical properties in the centre of the plates
- Excellent dimensional stability during and after machining (release of stresses)
- Excellent thermal and electrical conductivity
- Excellent polishing

APPLICATIONS

- Blow moulds for plastic injection
- Technical parts for the drilling industry (pads, power plates)
- Machine parts for high resistance requirements with low weight
- Machine elements where high resistance and low weight are required
- Mechanical elements with high mechanical properties





MECHANICAL PROPERTIES

THICKNESSES (mm)	Rm (MPa)	Rp0.2 (MPa)	A50 (%)	HB - BRINELL HARDNESS
100	575	532	7.8	180
200	533	479	3.6	180

Typical traction properties at room temperature; measured by S / ; test direction L-T

Information transcribed from the supplier datasheet.

PHYSICAL PROPERTIES

DENSITY	2.83 g/cm ³
MODULUS OF ELASTICITY	70 300 MPa
LINEAR EXPANSION COEFFICIENT	23.5 10 ⁻⁶ /K
THERMAL CONDUCTIVITY	154 W/mK
ELECTRICAL CONDUCTIVITY	23 m/Ohm mm ²

DELIVERY PROGRAM

PLATES

THICKNESSES (mm)	DIMENSIONS (mm)	PLATE WEIGHT (kg)	STOCK T651
60	3020 x 1520	779.45	●
80	3020 x 1520	1028.25	●
90	3020 x 1520	1156.80	●
100	3020 x 1520	1299.00	●
120	3020 x 1520	1558.90	●
140	3020 x 1520	1799.45	●
150	3020 x 1520	1948.60	●
180	4165 x 1210	2567.20	●
200	3550 x 1050	2109.75	●

Average production weights.

- Standard: generally available from stock
- Semi-standard: generally not available from stock
- Non-standard: generally not available from stock, manufactured to order and subject to special conditions.

ADVANTAGES OF HOKOTOL®

- Consistent hardness across the entire thickness of the plate
- Good polishing for critical surface components/optical surfaces
- Very good thermal conductivity
- Extremely uniform mechanical properties across the entire thickness
- High dimensional stability due to low residual stress
- Excellent machinability

HARDNESS ACROSS THE THICKNESS OF THE PLATE

HARDNESS HB (2.5/187,5)

